

# LUMIÈRE CONFIGURATION - E (NO LIGHTS)

LUMIÈRE LIGHT WALL

PRODUCT CODE: LLW15ENL



On frame On graphic



Straight Connector

## PRODUCT DESCRIPTION

Introducing the Lumiere Light Wall! A combination of innovative silicone-edge graphics and RPL fabric pop ups offers an easier and more cost effective SEG option. This SEG style display has the depth of the RPL so you can expose more of your message using endcap graphics. The Lumiere shrinks down in size - simply collapse the geometric frame and the SEG bungeed channel bars, and fold or roll the fabric graphics. Setup can be done by 1 person and in 5-10 minutes. SEG portability is easy and stylish.

<b>DISPLAY DIMENSION</b>	118.1" W x 117" H x 14.5" D
--------------------------	-----------------------------

## GRAPHIC DIMENSIONS

<b>4X3 MAIN GRAPHICS</b>	118.5" W x 89" H (4 Graphics)
--------------------------	-------------------------------

<b>4X3 END CAP GRAPHICS</b>	14.25" W x 89" H (4 Graphics)
-----------------------------	-------------------------------

## FRAME CONFIGURATION QUANTITY

<b>4X3 FRAME</b>	2 Frames
------------------	----------

## GRAPHIC MATERIAL

Stretch Fabric

## GRAPHIC FINISHING

Silicone beading is sewn around the perimeter of the fabric graphic. Silicone beading is hidden from view once installed.

## DISPLAY CONSTRUCTION

Aluminum Frame

## SHIPPING WEIGHTS & DIMENSIONS

4x3 Lumiere Light Wall (2 boxes total)

<b>Shipping Weight</b>	35 lbs (frame only) (each box)
	39 lbs (with graphics) (each box)
<b>Shipping Dimensions</b>	34" L x 14" W x 9" H (each box)

## GRAPHIC TURN AROUND TIME

2 business days after proof approval

<b>AVAILABILITY</b>	CA and PA
---------------------	-----------

# LUMIÈRE CONFIGURATION - E (NO LIGHTS)

LUMIÈRE LIGHT WALL  
PRODUCT CODE: LLW15ENL

## AVAILABLE ACCESSORIES



Lumiere Front Lit -  
Black Light LED



Lumiere Front Lit -  
Silver Light LED



Lumiere Black Light  
(150 W)



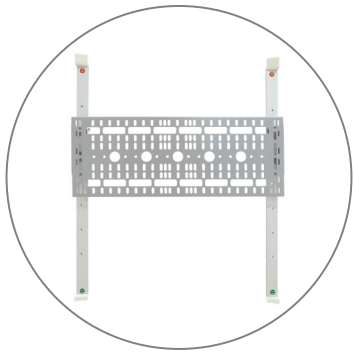
Lumiere Silver Light  
(150 W)



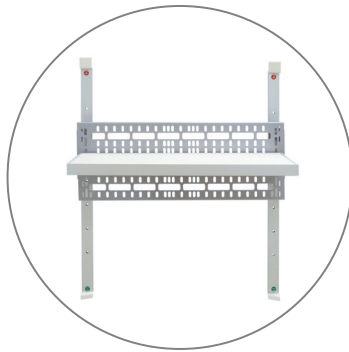
T135 LED Light



LED Light Bracket



Monitor Bracket



Shelf



Internal Showcase



La Caja Case



Genie Counter Case

# LUMIÈRE CONFIGURATION - E (NO LIGHTS)

LUMIÈRE LIGHT WALL  
PRODUCT CODE: LLW15ENL

## PARTS LIST



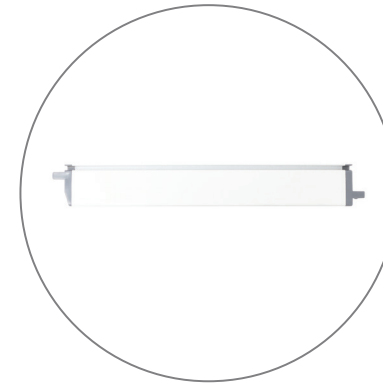
Qty 2 - Pop Up Frame



Qty 8 - 4 Section Channel Bars



Qty 8 - 3 Section Channel Bars



Qty 8 - Top & Bottom Endcaps



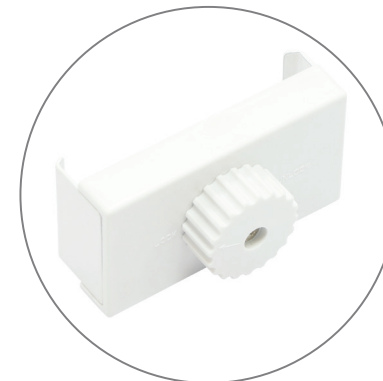
Qty 2 - Carry Bags



Qty 2 - Channel Bar Bags



Qty 3 - Stabilization Feet



Qty 8 - Straight Connectors

# LUMIÈRE CONFIGURATION - E (NO LIGHTS)

LUMIÈRE LIGHT WALL

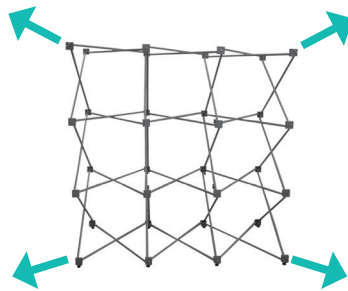
PRODUCT CODE: LLW15ENL

## SET UP INSTRUCTIONS

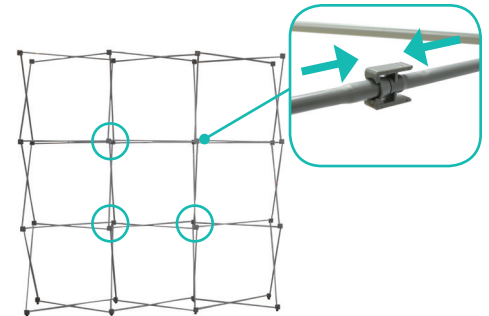
### Set Up Pop Up Frame



**a.** Place frame with the adjustable feet facing down.

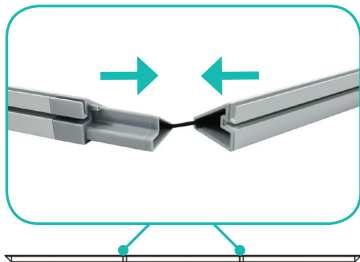


**b.** Expand the frame.

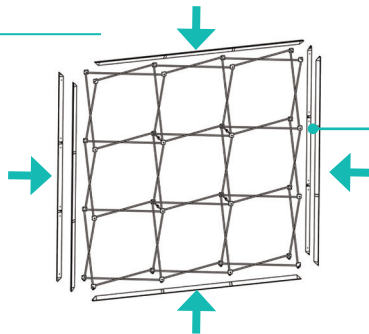


**c.** Close frame by pushing the outside of the frame until male and female ends connect.

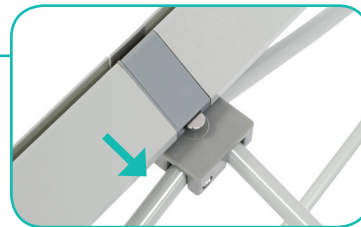
### Insert Channel Bars



**a.** Expand each channel bar. Follow bungee to connect.



**b.** Attach channel bars to frame.



**c.** Slide channels bars onto frame, from top to bottom, then secure onto metal peg.



**d.** Attach the top and bottom end caps on each side of the frame.

### Install Graphic



**a.** In each corner, insert the silicone edge beading into the groove.



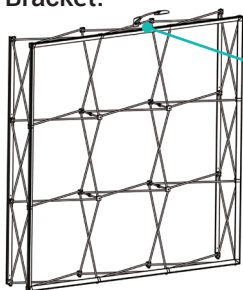
**b.** Then insert the remainder of the beading.



**c.** Repeat graphic installation on the end caps.

### Optional Accessories

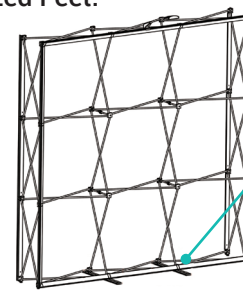
#### Light Bracket:



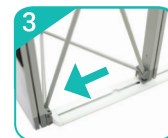
**a.** Snap the LED Light Bracket on top of the frame. Then slide the LED Light onto the bracket.



#### Stabilized Feet:



**a.** From the back, lift frame and insert adjustable feet onto stabilized feet. Then slide stabilized feet toward and insert onto the adjustable feet.

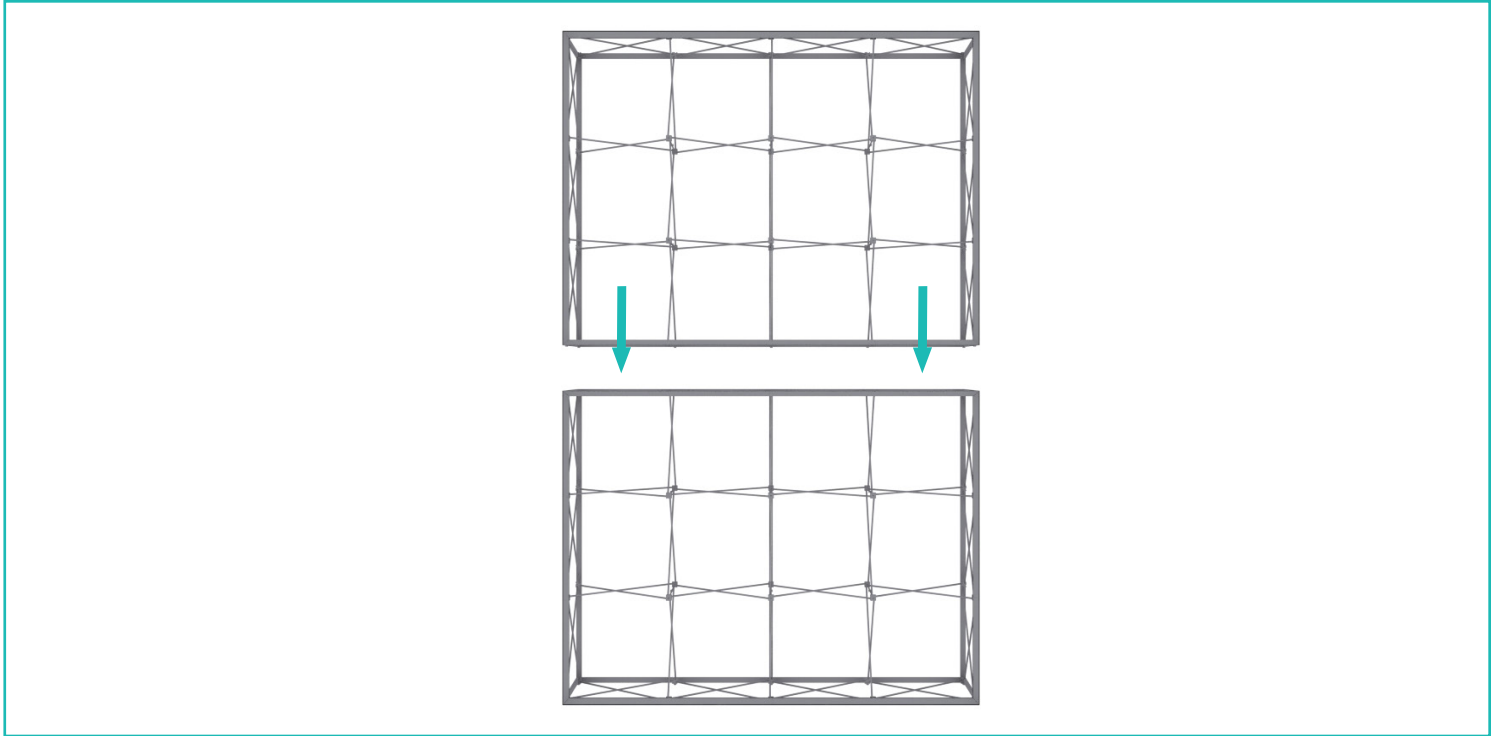


# LUMIÈRE CONFIGURATION - E (NO LIGHTS)

LUMIÈRE LIGHT WALL  
PRODUCT CODE: LLW15ENL

## SET UP INSTRUCTIONS

### Connecting Top Walls



Place the 4x3 frame on top of the 4x3 frame.

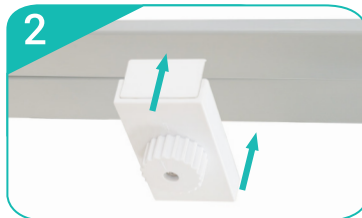
**Note:** 2 people are required to hold each side of the top frame while the third person secures with the Straight Connectors.

**Note:** Rendering shown without graphics for clarity. 4x3 front side graphic must be installed first before placing the frames on top.

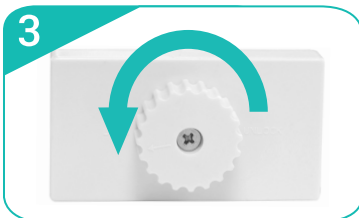
### Straight Connection



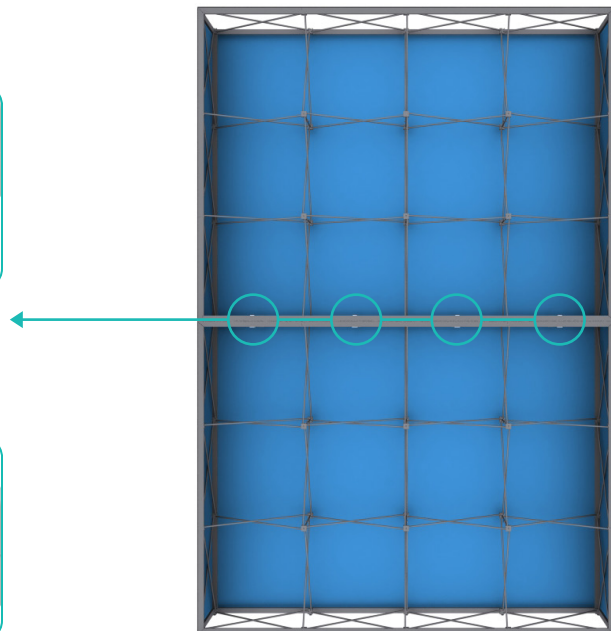
**1**  
\*Starting from behind, make sure the frames are flushed next to each other.



**2**  
Slide Straight Connector onto the channel bars of both frames.



**3**  
Turn dial to the left to lock the Straight Connector in place. Repeat for each vertical sections (8 total).



\*Back side of the stacked 4x3 frames shown above.

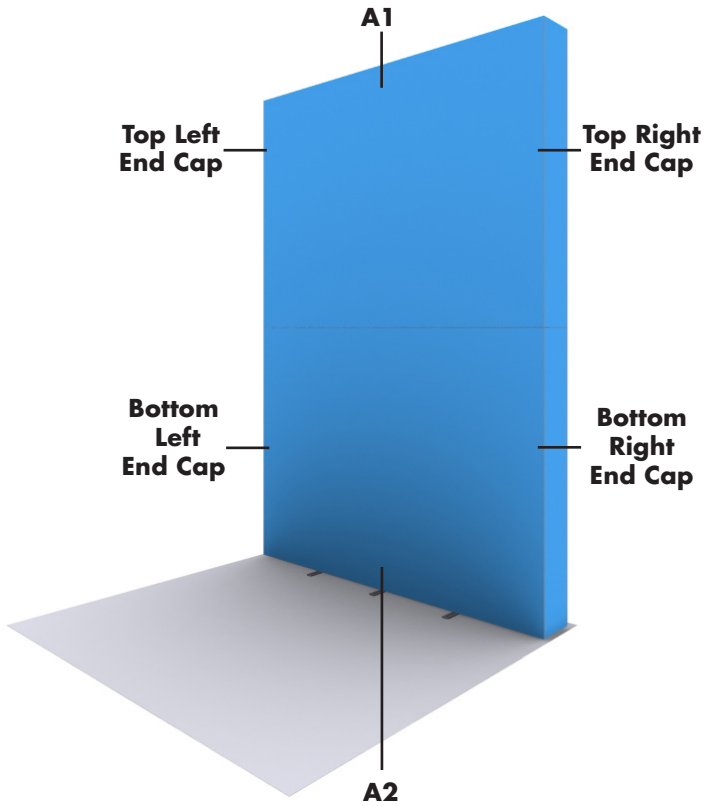
# LUMIÈRE CONFIGURATION - E (NO LIGHTS)

LUMIÈRE LIGHT WALL

PRODUCT CODE: LLW15ENL

## TEMPLATE GUIDE

### Front View



### Back View

